



roachconveyors.com

MODEL 251CDLR

HEAVY DUTY CHAIN DRIVEN LIVE ROLLER

HEAVY DUTY CHAIN DRIVEN LIVE ROLLER

SHIPPING IN 24 HOURS

from the 24 Hour Shipment Leader

FEATURES:

TEN conveying widths to select from: 15", 21", 27", 33", 39", 45", 51", 54", 57" & 63" between frames

FOUR roller centers--4-1/2", 6", 9" & 12"--one to suit most every application

Drives from 3/4HP to 2HP in two popular motor types (ODP & optional TEFC)

Reversible drive side or underside mounted

Available in formed or optional durable structural steel channel frame

Floor supports on 5' centers

Kneebraces (optional) for increased load capacity

Lengths from 5'-0" to 80'-0" (6" & 12" RC); 5'-3" to 58'-6" (4-1/2" RC); 5'-3" to 78'-0" (9" RC)

For pricing, contact a Roach distributor or call 870-483-7631 to locate your Roach distributor.



ROLLER-TO-ROLLER DESIGN



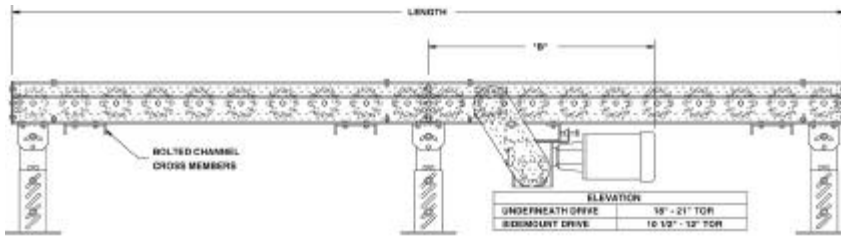
info@roachconveyors.com

808 HIGHWAY 463
TRUMANN, ARKANSAS 72472-1310
Tel 870-483-7631 Fax 870-483-7049

Over 39,000 sizes
& more than 100 models
from Roach Conveyors
24 Hour Shipments

MODEL 251CDLR

HEAVY DUTY CHAIN DRIVEN LIVE ROLLER



ANOTHER FIRST IN THE QUICK-SHIP INDUSTRY FROM ROACH CONVEYORS!

24 HOUR SHIPMENT SPECIFICATIONS

TREAD ROLLERS: 2-1/2" dia. x 11 ga. steel rollers, model 251S with sprockets.

CHAIN DRIVE: Roller to roller with No. 60 roller chain.

BED LENGTHS (4-1/2" or 9" RC): Intermediate bed section lengths 3'-0", 3'-9" 4'-6", 5'-3", 6'-0", 6'-9", 7'-6", 8'-3", 9'-0" and 9'-9" increments. Minimum overall conveyor length with drive 5'-3". Maximum overall conveyor length: 58'-6" with 4-1/2" RC; 78'-0" with 9" RC.

BED LENGTHS (6" or 12" RC): Intermediate bed section lengths are available in 1'-0" increments. Minimum overall conveyor length with drive 5'-0". Maximum overall conveyor length 80'-0".

ROLLER CENTERS: 4-1/2", 6", 9" or 12".

WIDTHS AVAILABLE (SHOWN IN BF): 15", 21", 27", 33", 39", 45", 51", 54", 57" and 63".

BED: 6" x 1-1/2" x 7 ga. and 4" x 1-1/2" x 7 ga. formed steel channel frame. Bed sections attached with couplings and floor supports.

CENTER DRIVE: Reversible drive either side mounted or underside mounted (specify). Main drive roller is supported by precision, heavy duty, lubricated, ball bearing units.

MOTOR DRIVE: 3/4 HP, 230/460/3, 60 cycle, ODP right angle gear motor.

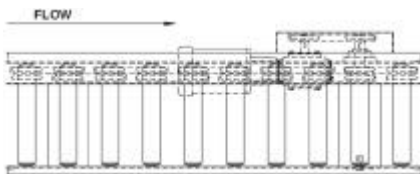
SPEED: 35 FPM, constant.

CHAIN GUARD: The chain drive is completely enclosed along the entire length of the conveyor.

BEARINGS: Removable type, heavy duty ball bearings, zinc-plated, grease packed, labyrinth sealed. Roller bearings provide roller capacity of 540 lbs. per roller (maximum).

FLOOR SUPPORTS: SH-4 with underside mounted drive adjustable 18" to 21" TOR. SH-1 with side mounted drive adjustable 10-1/2" to 12" TOR. Supports provided on 5' centers and should be lagged to floor.

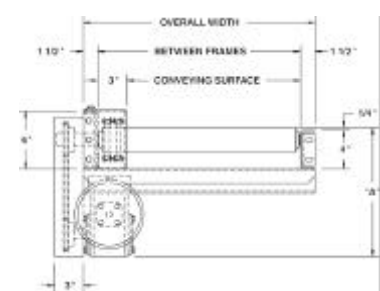
LEFT HAND DRIVE



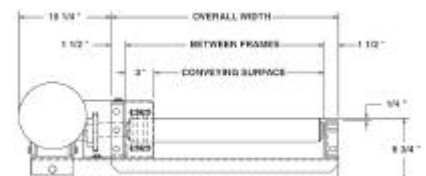
RIGHT HAND DRIVE



UNDERNEATH MOUNTED DRIVE



SIDE MOUNTED DRIVE



24 HOUR OPTIONAL EQUIPMENT

MOTORS: Available through 2 HP. Supplied as 230/460/3, 60 cycle, ODP or TEFC.

FLOOR SUPPORTS: Other height supports available including models SH-1 through SH-6.

KNEE BRACES: Available in models through HKB-6 for attachment to permanent supports.

ELECTRICAL CONTROLS: Magnetic starter (one direction or reversible); one direction manual starter; momentary start/stop push button station; forward/reversing/stop push button station. Mounting and pre-wiring not available in 24 hours.

BED: 4" at 5.4 lb. and 6" at 8.2 lb. structural steel channel frame.